

Operations & Maintenance Manual

**IMPORTANT
READ BEFORE OPERATING
MACHINE!**



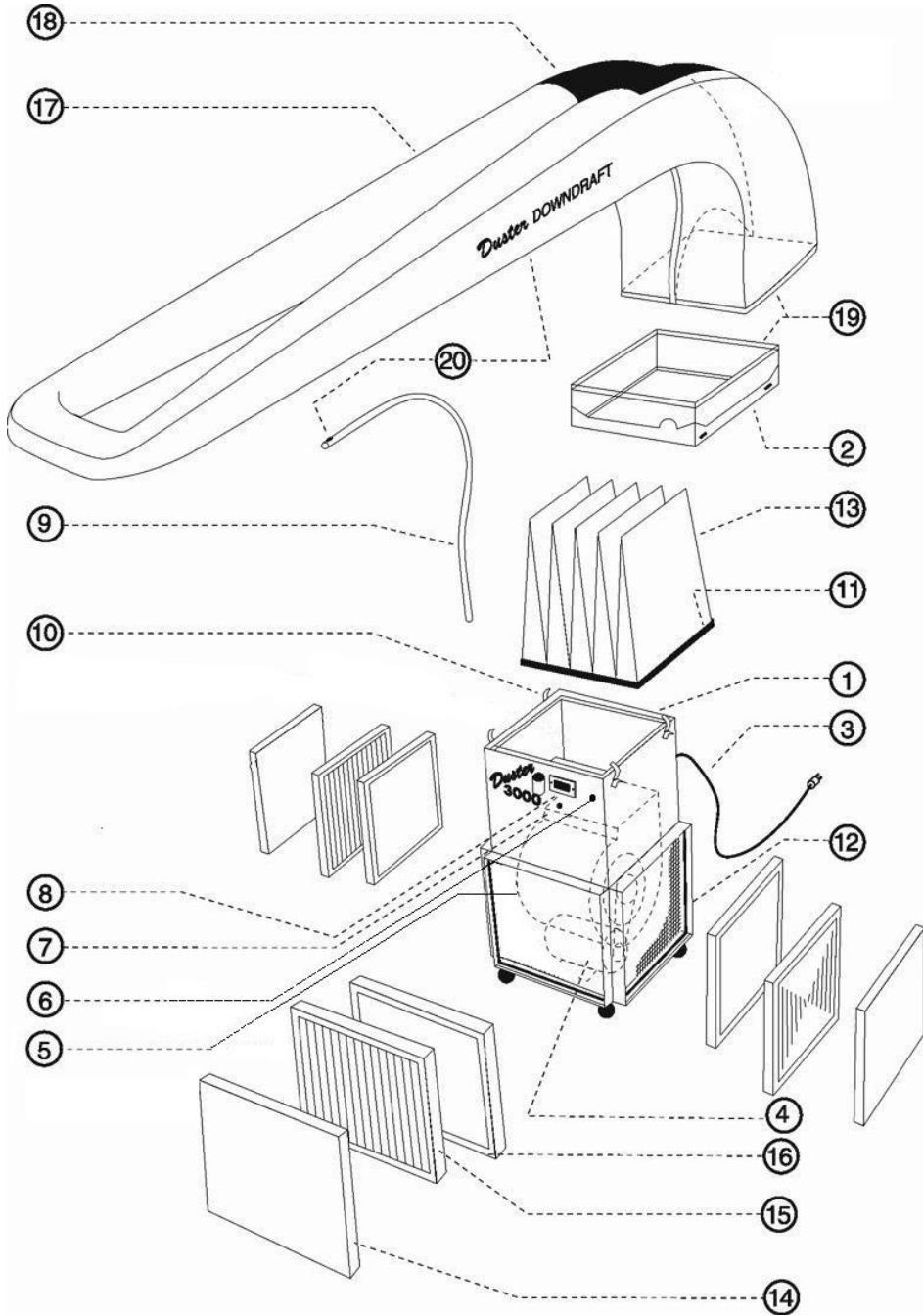
Duster **3000 DOWNDRAFT**

Model 00318

Mobile Prep Station

FOR EXPORT

Parts Diagram



Parts List

- | | |
|----------------------------|---------------------------------------|
| 1: Housing Assembly | 11: Top Filter Neoprene Seal |
| 2: Lexan Shroud | 12: Intake Filter Seals |
| 3: Power Cord | 13: Stage 4-Viledon Top Pocket Filter |
| 4: Motor | 14: Stage 1-2 Green Pre-Filter Pad |
| 5: Blower | 15: Stage 2-4 Pleated Intake Filter |
| 6: On/Off Power Switch | 16: Stage 3-2 Activated Carbon Filter |
| 7: 2 Light Indicator Panel | 17: Downdraft Plenum |
| 8: Digital Airflow Monitor | 18: Discharge Diffuser (Black) |
| 9: PVC Support Rod | 19: Velcro Strips |
| 10: Quick Release Latches | 20: Velcro Tabs |

Step 1: Uncrate the Duster 3000 Downdraft

- Remove all the screws from the front two 2"x3" wooden support uprights and front wooden panel with a #2 Philips screwdriver or power tool.
- Remove the two 2"x3" wooden support uprights.
- Remove box with filters and roll the Duster 3000 Downdraft off the skid.
- Remove the plastic bag.
- Remove gray PVC support from the rear of the Duster 3000 Downdraft and insert into the support holder located in the center of the front panel.

Step 2: Install the Intake Filters

- Remove the three intake filters from the box.
- Insert the intake filters in front of the preinstalled carbon filters. Make sure the black Velcro pull tabs attached to the carbon filters are not pinched between the filters.
- Secure the intake filters with the Velcro tabs located on both sides of each filter.



Correct



Incorrect

- Proper sealing of the intake filters will prevent dirty air from bypassing the metal framed intake filters. Improper sealing will plug up the carbon filters and the Viledon top pocket filter.

Step 3: Plug in the Duster 3000 Downdraft

- Locate an electrical outlet that is capable of handling the Duster 3000 Downdraft:
 - 220-230Vac, 8A, 50Hz, 1Ph
- If connected to a circuit protected by 15A fuses, use delay fuses marked "D".
- Make sure your electrical power panel is capable of handling an 8A load in addition to your current usage. Overloading your panel may not allow the Duster 3000 Downdraft to function correctly or to its full airflow capacity.
- Plug in the Duster 3000 Downdraft and roll it into position.

Step 4: Get Your Workspace Ready

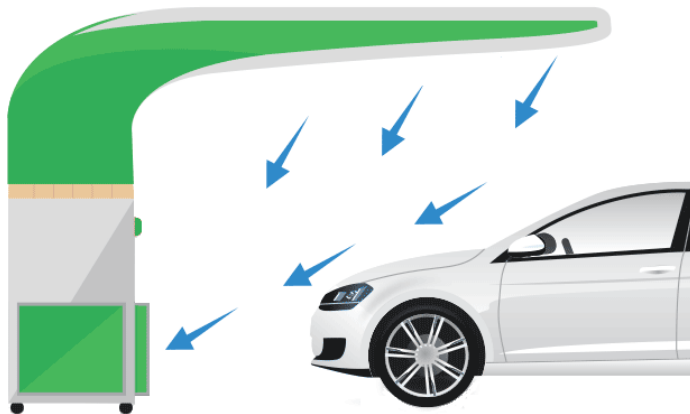
- Wear proper protective breathing apparatus when performing this task.
- Using the Duster 3000 Downdraft for the first time will dislodge dust that has already settled in the immediate area (light fixtures, support beams, etc.)
- We recommend cleaning the surrounding area before working on anything that may be affected by airborne dust.
- Turn on the unit and use compressed air to cause any settled dust to become airborne.
- Allow the unit to run as needed until the airborne dust has cleared. You are now ready to use your Duster 3000 Downdraft.

Digital Airflow Gauge / Operating Lights

- The digital readout indicates the airflow volume in cubic feet per minute (CFM).
- Optimal airflow with clean filters should be over 3000 CFM.
- As the filters trap particles, the CFM will drop.
- Green light indicates the machine is on and is in good working order.
- Yellow light indicates the filters are dirty and need cleaning or replacing.
- The Duster 3000 Downdraft will automatically shut down when the yellow light comes on to prevent permanent damage to the motor.
- The yellow light has been factory preset to go off around 2000CFM or lower.

Positioning the Duster 3000 Downdraft

For the greatest effectiveness, position the unit so that the downdraft plenum is directly above your work area. This will ensure that dust or paint overspray is directed towards the intake filters.



Reduce Inhalation of Harmful Airborne Particles

It is the particulate you can't see that will do the most damage to your lungs when you remove your mask or breathing apparatus. Dust becomes visible at 18 microns and this machine will capture harmful particulate down to 3 microns. At all times, technicians must wear either a compressed air fed respirator, Class D, or proper industry approved respirators while sanding or painting when operating this machine. We recommend that the unit also be left on during business hours, continuously. This machine will be recirculating existing shop air continuously to remove airborne contaminants even after removal of personal safety breathing equipment.

Island Clean Air Filters

Each ICA filter has been engineered to provide maximum filtration with calibrated velocities to capture harmful airborne particulates. Using non-ICA branded filters in the Duster 3000 Downdraft will: not seal properly, impede airflow, jeopardize employee safety, interfere with the sensitive calibration of the unit's monitoring system, and void the warranty.

***** Proper Cleaning & Maintenance Will Prolong Filter Life *****

Stage 1: Green Pre-Filter Pad (Part #11703)

- Filters dust and paint overspray.
- Clean daily or weekly. Do not pressure wash.
- Vacuum the front of the green pad. Remove from intake filter and blow with compressed air.
- It has an approximate life of 2-3 months.

Stage 2: Pleated Intake Filter (Part #11205)

- Filters dust and paint overspray.
- Clean daily or weekly. Do not pressure wash.
- Remove from machine and remove green pad. Blow yellow pleated side with compressed air and vacuum white pad.
- It has an approximate life of 6-9 months.

Stage 3: Activated Carbon Filter (Part #11209)

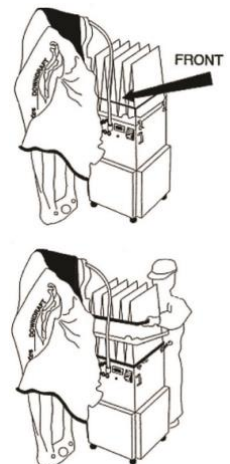
- Absorbs VOCs, fumes, and odors.
- Not cleanable. To improve fume absorption efficiency, shake monthly.
- Replace when it weighs over 15lbs. Typical life of 9-12 months.

Stage 4: Viledon Top Pocket Filter (Part #11207)

- Filters smaller particles down to 3 microns.
- Not cleanable. As it gets dirty, it will slowly change color from white to dark gray.
- With proper maintenance of the other three stages, this filter may last up to 18-24 months.

Accessing the Viledon Top Pocket Filter

- Turn off the unit and unplug from electrical outlet.
- Remove plenum from Lexan shroud.
- Hang the plenum on gray support rod.
- Unlatch the four quick release latches and lift the Lexan shroud off.
- The Viledon is now accessible and can be replaced.
- When installed properly, all five pockets of the Viledon should be visible from the front of the unit and be inflated and vertically aligned.
- When reinstalling the Lexan shroud, ensure that the pockets of the Viledon are not pinched between the body and shroud.



Accessing the Viledon Top Pocket Filter (cont.)



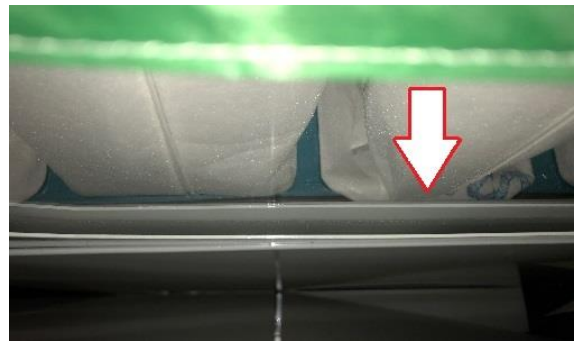
Correctly Installed



Facing Wrong Way



Bent & Not Aligned



Pinched by Lexan Shroud

General Maintenance

- Once a year, we recommend a general cleaning by removing all filters and using compressed air to blow out any accumulated dust on and in the Duster 3000 Downdraft.
- The metal surfaces can be wiped with warm water and detergent, avoiding the electronic components.

Downdraft Plenum Maintenance

- The downdraft plenum can be cleaned. Remove from unit, clean with soap and water, rinse with clean water, air dry, and reinstall. The black discharge diffuser on the top of the plenum can also be blown out with compressed air.
- Do not machine wash or dry.
- Small rips or tears can be repaired by removing the plenum, turning inside out, and taping the hole shut. For large damage, replacement plenums are available from the factory.

Troubleshooting

The Duster 3000 Downdraft is designed to run when connected to an adequate power supply and with all filters installed and cleaned. Most issues can be solved by:

- Ensuring adequate power is supplied to the unit (8A at 220V). We highly suggest using an isolated circuit so that the unit does not have to share power with other equipment.
- Ensuring all filters are installed correctly.
- Ensuring all filters are adequately cleaned.

If the above does not solve the issue, please contact ICA at 1-800-661-8211.

HazLoc Certification

- This equipment is suitable for use in:
 - Class I, Div 2, Group D
 - Class II, Div 2, Group F & G or NON-HAZARDOUS location.
- The power cord termination (PLUG CAP) is considered as the disconnect only device.
WARNING – EXPLOSION HAZARD – Power supply cord PLUG CAP is to be connected to receptacle located in non-hazardous area (non-classified area).

WARNING – Operators shall be adequately instructed on the use of these machines.

WARNING – This machine is for dry use only.

CAUTION – This machine is for indoor use only.

CAUTION – This machine shall be stored indoors.

- This machine meets the following Directive:
 - 2006/42/EC — Machinery Safety Directive
- To the following standards:
 - EN 60335-1:2012 + A11:2014
 - EN 60335-2-69:2012

Warranty

In order to validate your warranty, the Warranty registration card must be completed and returned to ICA.

All products made by ICA are warranted to be free of defects in materials and workmanship for a period of one (1) year from the date of original purchase.

This limited warranty does not include filters, cleaning or damages caused by neglect or misuse. and will cease if the product is resold, rented or otherwise disposed of. Only factory original filters are recommended for use with this product. The use of any other filters not specifically approved of or sold by ICA may affect the performance and safety of the product and will void this warranty.

In no event shall ICA be liable for any indirect, incidental or consequential damages from the sale or use of this product. ICA does not guarantee health benefits. This applies both during and after the term of this warranty.



ISLAND CLEAN AIR

Choose the Air you breathe



ISLAND CLEAN AIR INC.

#101 - 326 E. Kent Avenue South
Southbridge Business Park, Vancouver, BC, V5X 4N6, Canada

Tel: (604) 322-2979 • Fax: (604) 322-8674

Email: info@islandcleanair.com • Website: www.islandcleanair.com



Committed to Green



ATEX Approved



C US
CSA Certified



Air Resources Board